



Strong Families, Safe Kids

Transforming Lives Campaign



LOS ANGELES'
CHILDREN & FAMILY RESOURCE CENTER
AND TEEN/YOUNG ADULT HOUSING

OUR CHILDREN AND FAMILIES ARE IN CRISIS

Tragically, every day in America:

- 5 children die from abuse or neglect
- 1 in 7 children experience child abuse or neglect
- Every 10 seconds a case of child abuse is reported

In the five minutes that you are reading this, 30 new cases of abuse will have been reported.

The Harsh Reality

Unfortunately, children who experience abuse and neglect are susceptible to trauma, instability, and lack support for years to come. **In fact, over 103,000 teens, between the ages of 12 and 24, are homeless or housing insecure in Los Angeles County, majority of them having been a part of the child welfare system.**

These teens now experience disproportionately higher rates of:

- Unemployment
- Homelessness
- Substance Abuse
- Dependence on Public Assistance
- Lower Educational Attainment
- Teen Pregnancy
- Incarceration
- Suicidal Tendencies

No child, youth, or teen should have to live this way. Everyone deserves the opportunity for a better life that includes higher education, counseling, affordable and safe housing, and career planning that leads to healthy and productive lives.

“The nation is facing historic numbers of young people contending with anxiety, a lack of care for people with mental illness and rising deaths from drug overdoses.”

Pew Charitable Trust



Take Jasmine for Example...

For her, turning 18 meant finding a place to sleep, not planning for college.

Every year, thousands of teens “age out” of the child welfare system in Los Angeles. When they turn 18, they often end up alone, isolated, and needing a place to sleep. Living day by day becomes a challenge, and the anxiety takes a heavy toll on these young adults.

Although Jasmine felt old enough to take care of herself, she ended up on the horrible road to homelessness. She faced challenges that often come with feeling alone and unloved - suicidal tendencies, mental health issues, alcohol and substance abuse, or entering a life of exploitation.

- 60% of teens who “age out” of the system are homeless within six months to one year.
- 60% of children from the child welfare system will at some point become incarcerated.
- 60% of children who are sex trafficked come from the child welfare system.

BUT THERE IS HOPE... YOU CAN INVEST IN SAVING AND CHANGING LIVES

By intervening prior to abuse or neglect;

- Olive Crest stabilizes and strengthens children and families in crisis, helping keep them safe and from entering the child welfare system.
- Olive Crest equips young adults for successful futures, helping them rewrite their story and overcome the trauma they have endured in the early childhood years.

Therefore, Olive Crest will expand programs and services by adding two new facilities:

1. **Children and Family Resource Center**
2. **Provide Additional Teen/Young Adult Housing**

These two life-changing facilities will require working collectively with community partners to close gaps in services and provide a more streamlined approach in meeting the escalating needs of children, families, teens, and young adults in Los Angeles County.

*“If you want
to change the
world, help
kids.”*

Perry King

Trustee President
Emeritus, Actor, and
Olive Crest National
Spokesperson

HOW OLIVE CREST IS PART OF THE SOLUTION

Phase I - 2025 - \$13 Million Campaign - *Southeast Los Angeles*

PREVENTING TEEN HOMELESSNESS



\$7 Million
Teen/Young Adult Housing

TREATING CHILDREN AND FAMILIES IN CRISIS, RESTORING THE FAMILY, AND PREVENTING ABUSE



\$5 Million
Children and Family
Resource Center

ENSURING FACILITY STABILITY



\$1 Million
Facility
Endowment

Phase II - 2030 - \$15 Million Campaign - *Los Angeles County*



\$14 Million
Teen/Young Adult Housing



\$1 Million
Facility Endowment

Through this \$28 million Capital Campaign expansion, we will prevent homelessness, treat children and families in crisis, scale capacity, and ensure long term impact, to preserve the family, One Life at a Time®.

OUR 2-FOLD INNOVATIVE APPROACH

One of the most significant factors leading to child abuse and neglect is isolation. Suffering teens and young adults are often not connected to the support system and resources necessary to address their problems. Therefore, it is imperative that we are able to support more high-risk children, teens, and families with a lifeline of resources and provide the emergency services for their stability and growth.

TREATING CHILDREN AND FAMILIES IN CRISIS, RESTORING THE FAMILY, AND PREVENTING ABUSE AND NEGLECT

1. LOS ANGELES' INNOVATIVE CHILDREN AND FAMILY RESOURCE CENTER

Los Angeles' Children and Family Resource Center will not only link us to more struggling youth for immediate assistance, but also provide a comprehensive coordination of care. By connecting with these youth, they will be linked to the resources needed to flourish in the community.

- **A Youth Drop-In Center will serve youth and teens** who can come in and access a computer and obtain resources for leads on jobs, housing, and other vital information. This will serve as a place for mentors and young adults to socialize and connect in a safe environment. Basic essentials, including food and clothing, will be available, along with life skills classes, counseling services, laundry rooms, and a kitchen, all free of charge.
- **Expand the existing counseling center** to serve up to 350 individuals monthly. Currently we are serving 300 individuals per month, with a 20 to 30-day wait list.
- **A safe place for victims of sex trafficking** where teenagers can come to find safety, use the computer lab, make private calls, and visit with counselors who have been "trauma informed" trained. Additional resources include a private shower and pro bono legal help.
- As part of the Children and Family Resource Center, we will create a **home and family environment**, where young parents can develop their skills, attend parenting classes, and get the resources they need to be equipped and loving parents.

With over 50 years of experience, we know that services available to this population are few and far between, and the majority of them depend on the ability of teens and young adults to successfully navigate adult systems, which most are not able to do. The Children and Family Resource Center will serve as a place for thousands of those in crisis to come and access critical services under one roof - services that are vital to their success.



Olive Crest's New Children and Family Resource Center in Bellflower



Youth Drop-In Center, Bellflower, CA
Olive Crest in Los Angeles

PREVENTING TEEN HOMELESSNESS AND EQUIPPING FOR LIFE

2. NEW TEEN/YOUNG ADULT HOUSING

- 1,400 youth “age out” of the child welfare system each year in Los Angeles
- 20% will become instantly homeless (i.e., living in their car or on the streets)
- Nearly 500 youth in California are on a waiting list for supportive housing, over 100 are homeless while waiting

Los Angeles is home to the largest child welfare population in the nation with approximately 30,000 children and young adults on any given day. Seventeen (17%) percent of those individuals are between the ages of 18 and 21, and less than four (4%) percent of teens who have been in the child welfare system will graduate from college.

These teens are falling through the cracks of our society. For many, they are approaching adulthood with a sense of anxiety and overwhelming fear. Without housing and support programs, these teens are less likely to complete their education, find employment, and make healthy relational decisions.

Many of these teens are resilient despite the adversity they have faced. Every day, Olive Crest helps them begin to dream again and discover life with a purpose. Our goal is to see their unique strengths invested and their potential reached.

Olive Crest plans to expand its services by providing 12 new, two-bedroom units adjacent to the Family and Children Resource Center.

In addition to stable housing, all teens are offered customized life-skills support to ensure college success, breakdown barriers to employment, and address emotional wounds that would otherwise be carried into adulthood. Olive Crest’s specialized program and services include:

- Personalized case management
- Mental health support
- Alcohol and substance abuse treatment
- Health care
- Wellness Classes
- Mentoring
- Financial literacy
- Tutoring
- Career counseling/goal setting

These services address the individual needs of high-risk teens as they work toward self-sufficiency and adulthood, and we are proud to report that almost 85% of teens who participate in Olive Crest’s program graduate successfully.

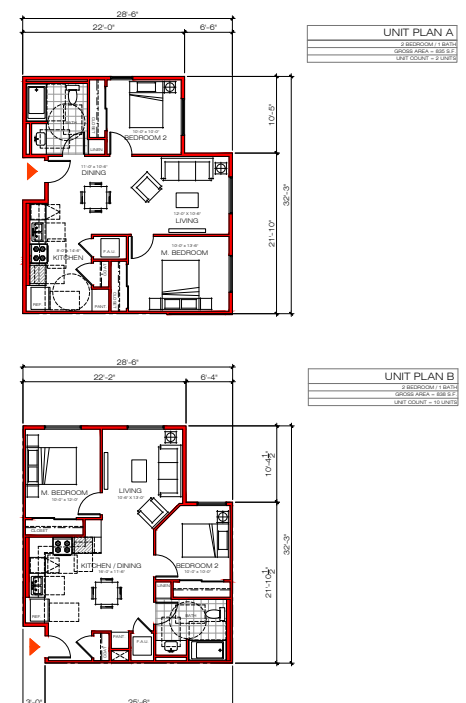
Together we can reduce teen homelessness in Los Angeles.

“We made our campaign gift to help forge pathways to long-term stability and economic independence for transition-aged youth.”

Campaign Donor



Teen/Young Adult Housing Rendering





DOUBLE YOUR GIFT TO HELP PREVENT TEEN HOMELESSNESS

On March 1, 2024, Olive Crest received an extraordinarily generous \$3 million anonymous matching gift challenge to help prevent teen homelessness in Los Angeles by supporting the construction of a new apartment complex. We are truly thankful to the visionary philanthropic family who joined us in this campaign to provide safe new housing and reduce teen homelessness in our community. Funds will be used to build a new, safe apartment complex for teens. Support for this vision to provide new housing, keep young people safe, and prepare them for educational and career success as productive citizens has inspired our campaign. Our goal is to help transform the lives of young people who are struggling to find a place to live that also includes 24-hour case management and supportive services. This matching gift commitment is part of a \$10 million campaign to fund a new apartment complex for teens in Los Angeles. All gifts and pledges received between March 1, 2024, and March 1, 2026, will be matched as the gifts and pledge payments are received, up to \$3 million.

SERVING CHILDREN AND FAMILIES FOR 50 MORE YEARS

Serving children and families has been at the heart of Olive Crest's mission for 50 years and will be for years to come. We have learned the greatest common factors among children, young adults, and families in the child welfare system are social isolation, low socioeconomic status, and housing instability. By expanding our services through a Children and Family Resource Center and new teen/young adult housing, we can bridge this gap and get ahead of abuse and neglect in Los Angeles, ultimately helping us to reach our goal of serving 1.2 million children and families by 2030. Together, we can ensure Child Abuse Stops Here.®

"We humbly invite you to change the trajectory of a life as we strengthen, equip, and restore children, youth, and families. I have seen firsthand how these services can forever change a young person's life. Together we can be the change!"

Donald Verleur
Chief Executive Officer
Olive Crest



Strong Families, Safe Kids

For more information, contact:

562.977.6923

16911 Bellflower Blvd
Bellflower, CA 90706

www.olivecrest.org/los-angeles/